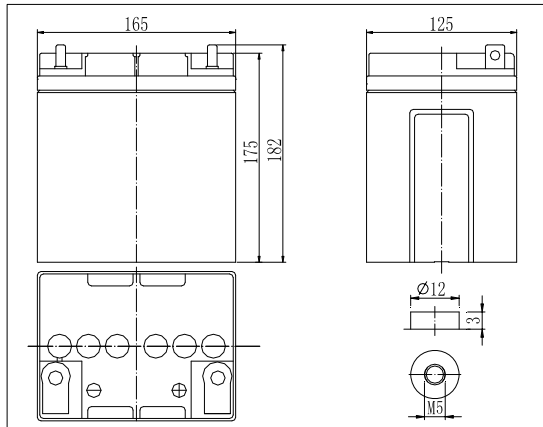


## Dimensions

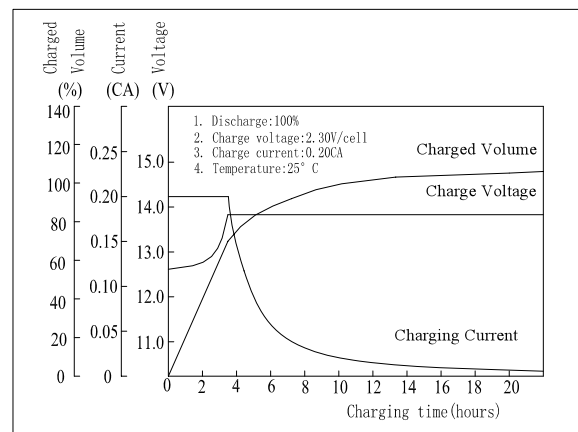


## Specifications

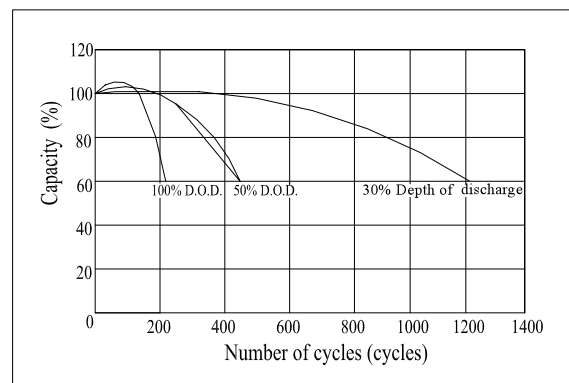
Nominal Voltage		12 V
Capacity(20HR, 25°C)		28Ah
Dimension	Length	166mm (6.54inch)
	Width	175mm (6.89inch)
	Height	125mm (4.92inch)
	Total Height	125mm (4.92inch)
Approx. Weight		9.2kg (20.3lbs)
Internal resistance (Fully charged, 25°C)		Approx. 10mΩ
Capacity affected by temperature (20HR)	40°C	102%
	25°C	100%
	0°C	85%
	-15°C	65%
Self-discharge (25°C)	3 month	Remaining Capacity: 91%
	6 month	Remaining Capacity: 82%
	12 month	Remaining Capacity: 65%
Nominal operating temperature		25°C±3°C(77°F±5°F)
Operating temperature range		-15°C~50°C (5°F~122°F)
Float charging voltage(25°C)		13.60 to 13.80V
Cyclic charging voltage(25°C)		14.50 to 14.90V
Maximum charging current		8.4A
Terminal material		Lead
Maximum discharge current		420A(5 sec.)

- ◆ Absorbent glass mat technology;
- ◆ Recognized by UL & CE;
- ◆ ABS container.

## Charging Characteristics(25°C)



## Cycle Life(25°C)



Note: Floating life at 20°C designed for 10 years.

## Constant Current Discharge Characteristics (A, 25°C)

F.V/TIME	5min	10min	15min	30min	60min	3h	5h	10h	20h
9.60V	103	65.2	52.1	30.2	19.0	7.11	4.87	2.64	1.42
10.2V	98.0	61.9	50.1	29.0	18.2	7.00	4.80	2.62	1.41
10.8V	92.2	58.2	47.5	27.5	17.3	6.86	4.70	2.60	1.40

## Constant Power Discharge Characteristics (Watt, 25°C)

F.V/TIME	5min	10min	15min	30min	60min	3h	5h	10h	20h
9.60V	1152	735	594	346	220	84.4	58.2	31.7	17.1
10.2V	1094	699	571	332	211	83.2	57.3	31.4	16.9
10.8V	1029	657	542	315	201	81.5	56.2	31.4	16.8