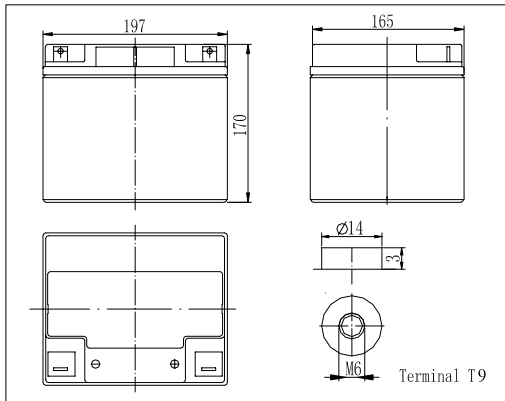


Dimensions

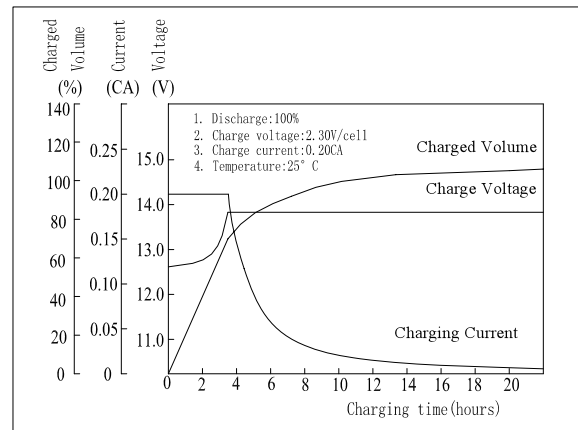


Specifications

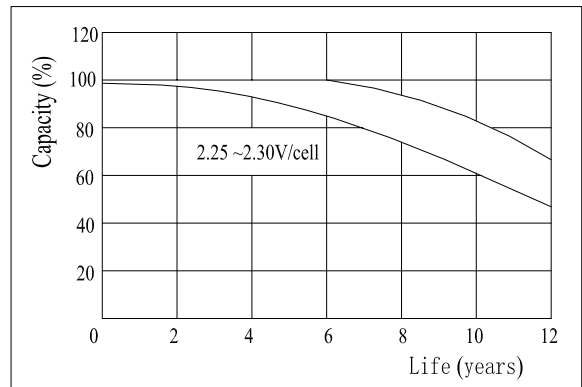
Nominal Voltage	12 V	
Capacity(10HR, 25°C)	38Ah	
Dimension	Length	197mm (7.76inch)
	Width	165mm (6.50inch)
	Height	170mm (6.69inch)
	Total Height	170mm (6.69inch)
Approx. Weight	13.3kg (29.3lbs)	
Internal resistance (Fully charged, 25°C)	Approx. 9.7m Ω	
Capacity affected by temperature (10HR)	40°C	102%
	25°C	100%
	0°C	85%
	-15°C	65%
Self-discharge (25°C)	3 month	Remaining Capacity: 91%
	6 month	Remaining Capacity: 82%
	12 month	Remaining Capacity: 65%
Nominal operating temperature	25°C ± 3°C (77°F ± 5°F)	
Operating temperature range	-15°C ~ 50°C (5°F ~ 122°F)	
Float charging voltage(25°C)	13.50 to 13.80V	
Cyclic charging voltage(25°C)	14.50 to 14.90V	
Maximum charging current	11.4A	
Terminal material	Copper	
Maximum discharge current	380A(5 sec.)	

- ◆ Absorbent glass mat technology;
- ◆ Recognized by UL & CE;
- ◆ ABS container.

Charging Characteristics(25°C)



Floating Life Characteristics (25°C)



Note: Floating life at 20°C designed for more than 12 years.

Constant Current Discharge Characteristics (A, 25°C)

F.V/TIME	5min	10min	15min	30min	60min	3h	5h	10h	20h
9.60V	116	77.4	61.4	38.7	23.9	9.84	6.94	3.86	2.02
10.2V	110	73.5	59.0	37.2	23.0	9.69	6.84	3.82	2.01
10.8V	104	69.1	56.0	35.3	21.8	9.50	6.70	3.80	2.00

Constant Power Discharge Characteristics (Watt, 25°C)

F.V/TIME	5min	10min	15min	30min	60min	3h	5h	10h	20h
9.60V	1219	836	675	435	273	116	82.1	46.1	24.3
10.2V	1158	794	648	417	262	114	80.8	45.6	24.1
10.8V	1089	747	615	396	249	112	79.2	45.4	23.9